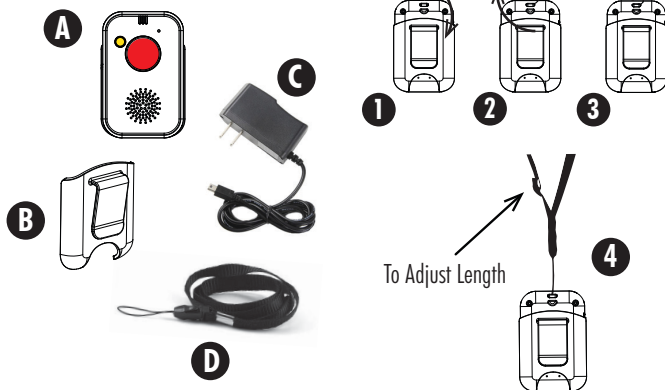


## Included in Kit

- A. Pendant
- B. Pendant Beltclip
- C. USB Charger
- D. Pendant Lanyard



## Attaching the Lanyard

## Manufacturer's Disclaimers and Limited Warranty

The Manufacturer's warranty period is one year from time of purchase.

**COMMUNICATION AND RESPONSE LIMITATIONS:** Purchaser acknowledges that signals pass through communication networks wholly beyond the control of the Manufacturer and are not maintained by the Manufacturer, and, therefore, the Manufacturer shall not be responsible for any equipment or communication failure which prevents transmission signals from reaching your contact list including emergency 911 operators or damages arising therefrom. Purchaser acknowledges that the Manufacturer provides no response to the System's equipment. The Manufacturer shall not be responsible for ambulance, police or other emergency response.

**TESTING AND SERVICE OF THIS EQUIPMENT:** The equipment, once installed, are in the exclusive possession and control of the Purchaser, and it is Purchaser's sole responsibility to test the operation of equipment and request warranty service if the equipment is under warranty.

**PURCHASER'S EXCLUSIVE REMEDY:** Purchaser's exclusive remedy for the Manufacturer's default hereunder is to require the Manufacturer to repair or replace, at the Manufacturer's option, any equipment or part of the personal emergency alert system which is non-operational during the Manufacturer's warranty period.

**LIMITATION OF LIABILITY:** This equipment is not designed or guaranteed to prevent any loss or injury. This Limited Warranty and Disclaimer of Liability constitutes the terms of sale and use of the equipment, and if there should arise any liability on the part of the Manufacturer as a result of any cause whatsoever, regardless of whether or not such loss, damage, or personal injury was caused by or contributed to by the Manufacturer's negligence to any degree or failure to perform any obligation or strict products liability, such liability will be limited to an amount paid by the Purchaser to the Manufacturer for the product, or to the sum of \$350.00, whichever is greater.

For warranty information, contact  
Customer Service at 1-888-366-8434.

Model 50711  
FCC ID TYDSX711  
Made in China Exclusively for NXT-ID  
Part # 50711QSG v7.3

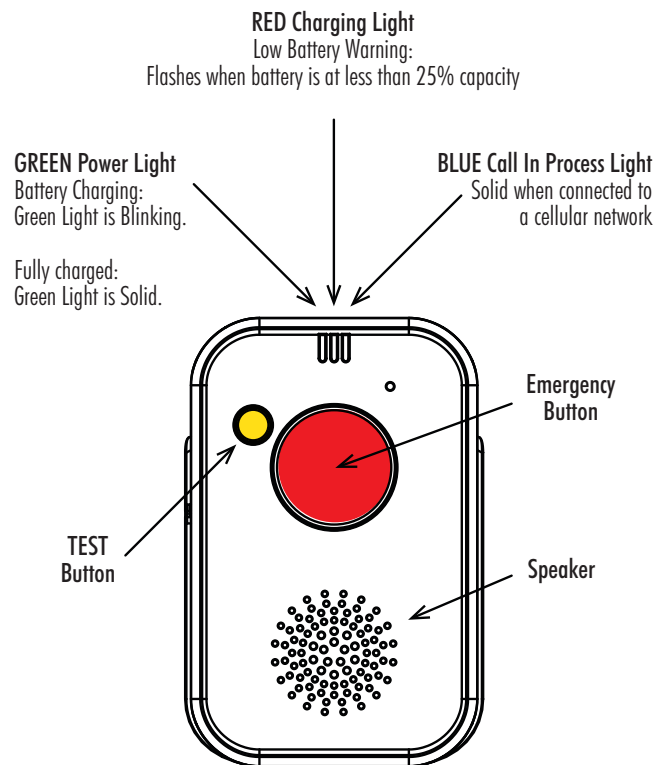
# User's QuickStart Guide

## Model 50711

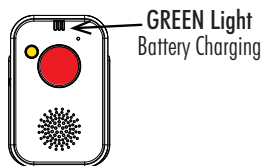
# notifi911+

## mobile emergency response pendant

## Pendant Functions



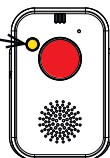
## 1 Charging the Pendant



- Blinks Green when charging
- Solid Green when fully charged
- It may take 3 to 4 hours to ensure a full charge

## 2 Performing a System Check

PRESS Test Button  
for 4 Seconds



1. "Power ON" (Pendant wakes up)
2. Version number
3. Pendant checks battery status and announces either:
  - "Battery OK" if Battery greater than 25%"
  - "Recharge Battery Soon" if battery less than 25%
4. Pendant then checks for cellular service and announces either:
  - "Service Coverage OK" — Good Cellular service coverage
  - "Low signal strength or no service coverage"
5. Battery Supervision "On" or "Off" (See #4 for more Information)
6. "Return to standby" (The pendant returns to a low-power STANDBY mode)

## 3 Calling 911

Press RED Emergency Button  
for 1 Second



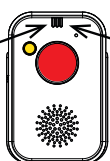
BLUE Light  
Call in Progress

- Blue Light flashes, short musical chime is heard, Pendant calls 911
- Talk to the 911 operator through the pendant **and immediately give the 911 operator your name, location, and issue**
- **Pendant hangs up automatically when the 911 operator concludes the call**

## 4 Battery Supervision

When enabled, Notifi911+ will automatically check its battery status every 24 hours.

RED Light  
Low Battery Warning



BLUE Light  
Flashes when Supervision  
turned On or Off successfully

Battery Supervision ON:

- Estimated standby time between charges: 2-3 months
- Checks the status of the battery every day at the same time
- At 25% capacity or less, the pendant announces "Recharge Battery Soon" daily until the pendant is recharged

Battery Supervision OFF:

- Estimated standby time between charges: 6-12 months
- Manually perform a System Check periodically to check the status of the battery

## 5 Troubleshooting

If you are having problems, please call  
**1-888-366-8434**

**Note: If you place a call to 911 accidentally or to test, it is IMPORTANT that you stay on the phone and tell them you were testing your phone's 911 feature.**

Turning Battery Supervision ON or OFF:

- Push and HOLD the TEST button for 4 seconds
- When you hear "Version Number", HOLD the TEST button again until the Blue light flashes
- The System Check prompt will announce "Battery Supervision ON" or "Battery Supervision OFF"

Repeat these steps to toggle the Battery Supervision feature ON or OFF